



by convectium

Operation & Maintenance Manual

P/N: VAS01316

JUNE 2018



Operation and Maintenance Manual

710 Captain

Document: VAS01316 – Operation and Maintenance Manual

Table of Contents

Bill of Materials	2
Recommended Maintenance	2
System Layout	3
System Layout (Continued).....	4
Operational Sequence	5
Electrical Schematic	6
Pneumatic Schematic	7

Operation and Maintenance Manual

710 Captain

Document: VAS01316 – Operation and Maintenance Manual

Bill of Materials

TABLE 1. Functional items installed on the 710 Captain, with their item number, part number, and description. Item numbers correspond to those found on the pneumatic controls schematic, VAS01316-1600. Refer to Figure 1- 4 for actual locations on these items.

ITEM	DESCRIPTION	MFG	PART NUMBER	QTY
1	PRESS ENCLOSURE	COMOSO	VAS01316-1100	1
2	COMPRESSOR	PORTER CABLE	VAS01316-1601	1
3	SHUTOFF VALVE	PARKER	VAS01316-1602	1
4	FILTER/REGULATOR	PARKER	VAS01316-1603	1
5	DIRECTIONAL CONTROL VALVE	PARKER	VAS01316-1604	1
6	FLOW CONTROLS	PARKER	VAS01316-1605	2
7	PRESS CYLINDER	FABCO	VAS01316-1606	1
8	SAFETY CONTROLLER	BANNER	VAS01316-1501	1
9	TWO HAND TOUCH PADS W/BRACKETS	BANNER	VAS01316-1502	1
10	MAGNETIC DOOR SWITCH SET	BANNER	VAS01316-1503	1
11	CYLINDER POSITION SENSORS W/CLAMPS	TURCK	VAS01316-1504	2
12	ON/OFF SWITCH	EATON	VAS01316-1505	1
13	E-STOP SWITCH	EATON	VAS01316-1506	1
14	SIGNAL LIGHT	BANNER	VAS01316-1507	1
15	MOTOR STARTER	EATON	VAS01316-1508	1
16	CIRCUIT BREAKER	EATON	VAS1316-1509	1
17	POWER SUPPLY	EATON	VAS01316-1510	1
18	TERMINAL BLOCKS	EATON	VAS01316-1511	29
19	RISER PLATE	COMOSO	VAS01316-1011	1
20	PRESS PLATE	COMOSO	VAS01316-1010	1

IMPORTANT MAINTENANCE ITEM

Every 6-12 months, depending on usage, unplug cord from wall, bleed pressure out of compressor. Remove rear panel, rotate shut off valve to off, check for '0' pressure on gauge, remove filter bowl and replace filter element. Use only Parker element part number P32KA00ESE.

Operation and Maintenance Manual

710 Captain

Document: VAS01316 – Operation and Maintenance Manual

System Layout:

Figure 1: Layout

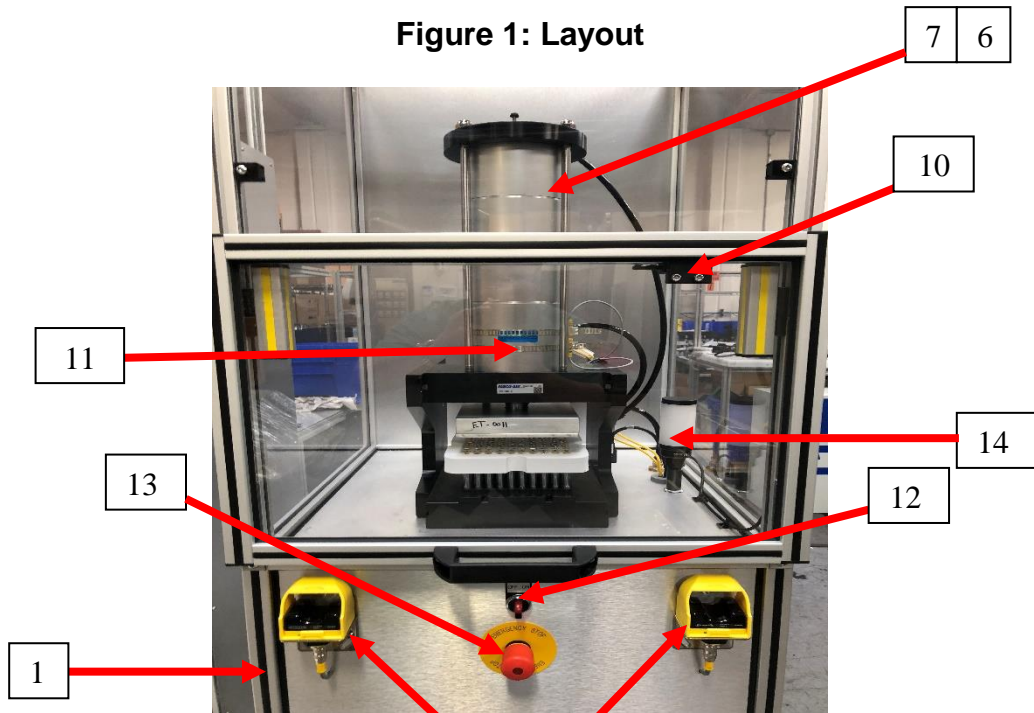


FIGURE 2

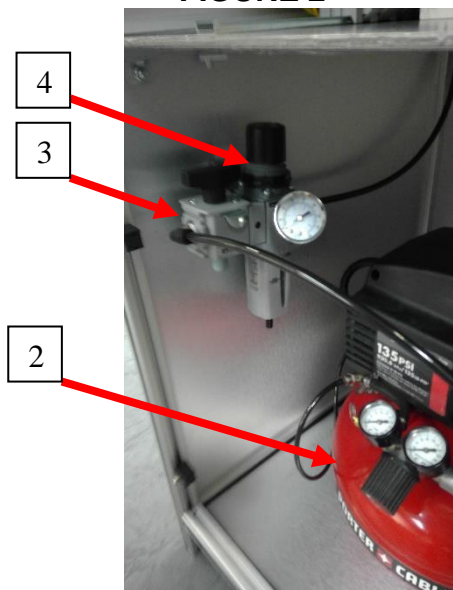
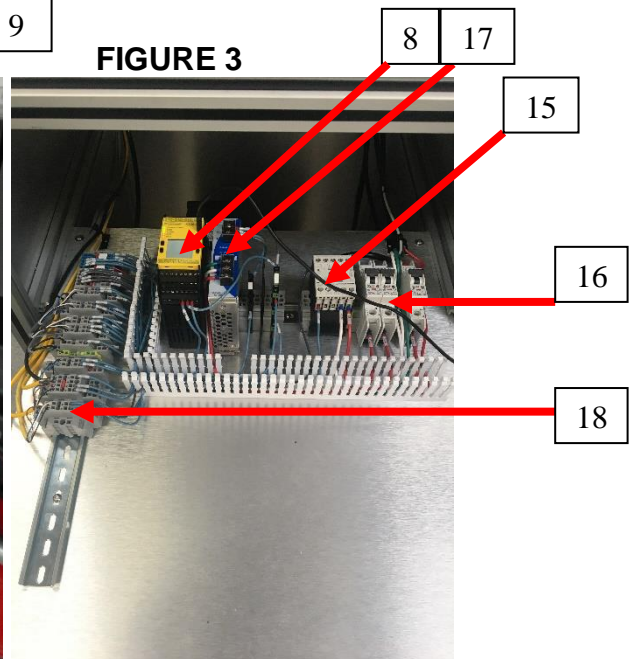


FIGURE 3



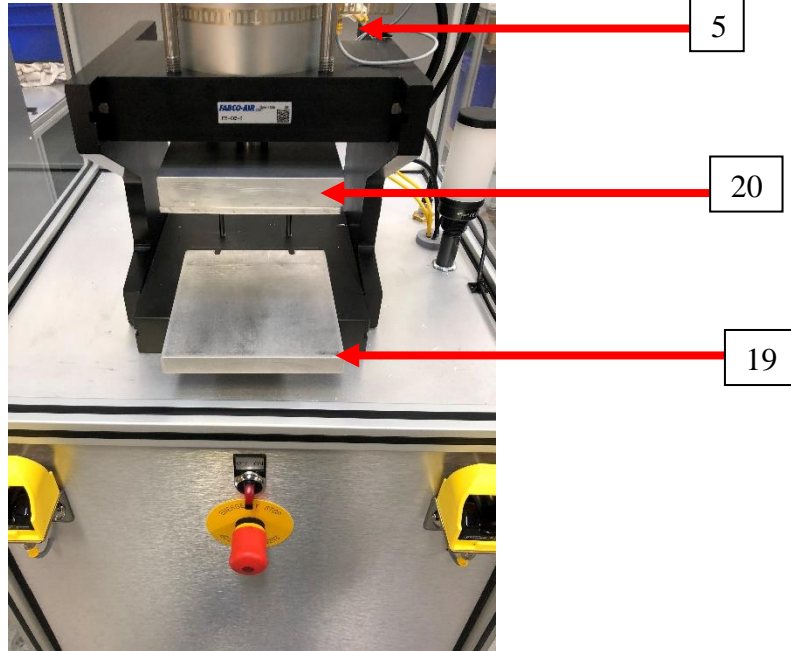
Operation and Maintenance Manual

710 Captain

Document: VAS01316 – Operation and Maintenance Manual

System Layout:

FIGURE 4



Operation and Maintenance Manual

710 Captain

Document: VAS01316 – Operation and Maintenance Manual

Operational Sequence

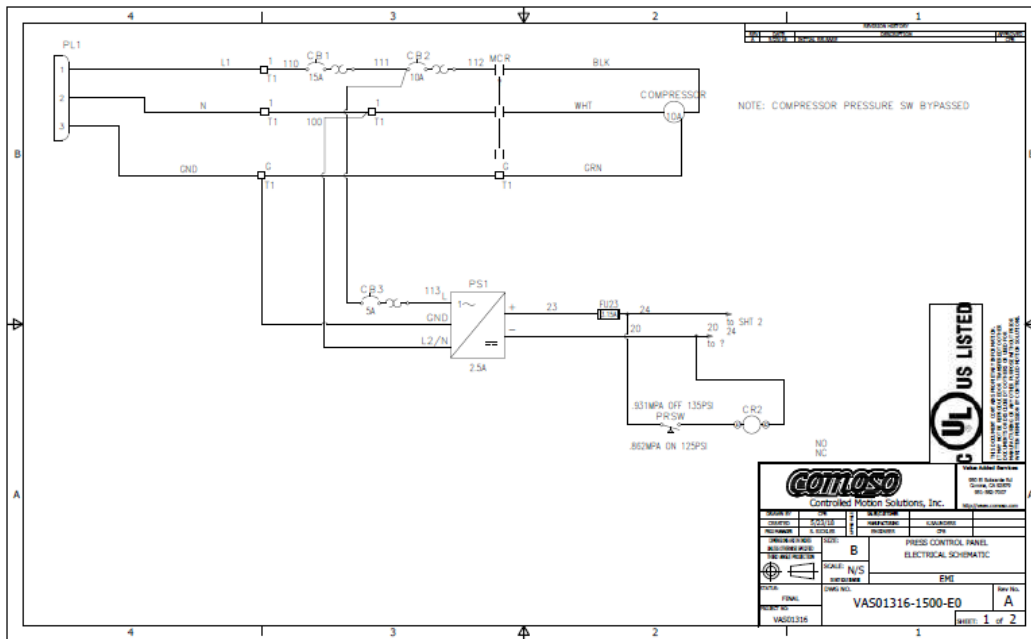
- 1.) Plug power cord into 110VAC outlet.
- 2.) Turn on/off switch to on, switch illuminates and compressor starts.
- 3.) When compressor cycles off, lift door and rotate door stops into position to support door.
- 4.) Insert loaded cartridge tray assembly until alignment pins in rear are fully engaged.* NOTE: 1.0ml cartridge tray loads **without** riser plate, 0.5ml cartridge tray must use riser plate. If riser plate is used, make sure riser plate and tray fully engage alignment pins in rear.
- 5.) Lift door and rotate stops to the inside and slowly lower door. Light will turn green, once door has completely closed. Place fingers on touchpads simultaneously (both touchpads need to be touched at the same time, if press cycle does not start, remove fingers and retry).
- 6.) Press will begin its first cycle to align the cartridges and mouthpieces. Press will come down to first position, stop, and retract. Light will turn blue.* NOTE: If the light doesn't change to blue, but remains green, replace fingers on touchpads and repeat this cycle until the light changes to blue. Check for proper alignment of cartridges. If needed, open door and adjust cartridges. Close door and repeat first cycle.
- 7.) Once a visual inspection has determined that all cartridges are aligned, place fingers on touchpads again and the second press cycle will start. **IMPORTANT:** keep fingers on touchpads until press cycle is complete, this may take several seconds. Hold fingers on touchpads until a "POP" sound is heard or visual confirmation of the stems locking at furthest locking ring; this indicates that the cartridges are fully pressed. NOTE: If not fully pressed repeat steps 6-7.
- 8.) Remove fingers and press will retract, open the door, rotate stops outwards and remove cartridge tray.

Operation and Maintenance Manual

710 Captain

Document: VAS01316 – Operation and Maintenance Manual

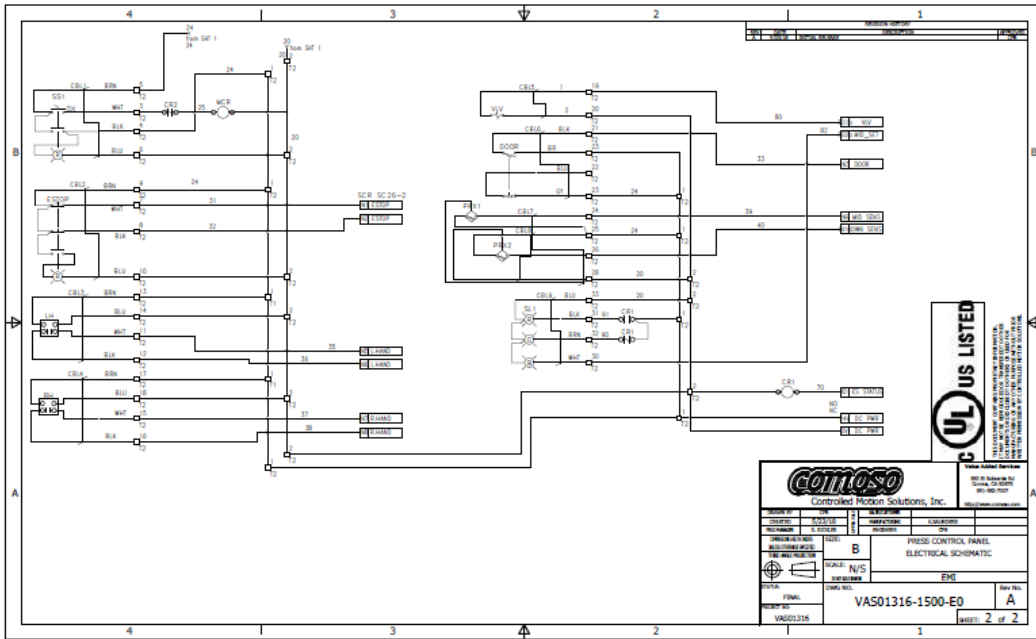
Electrical Schematics:



Operation and Maintenance Manual

710 Captain

Document: VAS01316 – Operation and Maintenance Manual



Pneumatic Schematic:

